

HUSKY CARA FINE HOMES

● QUALITY ● CRAFTSMANSHIP ● INTEGRITY





ABOUT US

Husky Cara Fine Homes is dedicated to producing a finished project that will last for generations. Our team consists of architects , structural engineers, high end designers and skilled tradesmen dedicated to transforming your living space. We utilize the industries top project managing applications to keep every aspects of your project simplified , refined and integrated. We specialize in kitchens , bathrooms and basements. Including the following services :

- Architectural and engineering designs or drawings for as build or new design layouts.
- Extensive metal and wood framing for remodels and new construction.
- Electrical, plumbing and hvac layout for remodels and new construction.
- Kitchens ,bathrooms, basements ,movie theaters and podcast build outs.

When it's time to remodel your home you should partner with a company that has a proven track record and award winning achievements. With over 15 years of experience we can take your vision & make it a reality.



Moroccan vanity

This Moroccan inspired floating double vanity was installed by our skilled craftsman. This well executed design plan includes a leathered textured quartz countertop and herringbone slate backsplash. Porcelanosa large format tile with frost colored grout & 12 inch base boards add small but significant details to this extensive bathroom remodel.



California Open Concept

Modern kitchens with an open concept will never go out of style. This concept was well executed by our team for our clients that loves to entertain. This California inspired kitchen theme is brought to life with shaker style cabinets and an oversized quartz island. The brushed gold fixtures, and cabinet hardware is the perfect accompaniment to the 20 inch hanging pendants trimmed in brushed gold. An entire electrical over haul was performed throughout this 5,500 sqft full home remodel with lots of the attention being applied to the kitchen. Island outlets, under mount cabinet lights, pendants, recessed and sconces finish out the space. 10MM LVP was installed in the kitchen and throughout the entire home. Load bearing walls were removed, redesigned and restructured by our licensed structural engineers to create an open concept kitchen.



Ultra Modern Master

A newly renovated hall bathroom is the perfect way to welcome guest into your home. This stunning renovation began with a full demo down to the studs. We removed the vanity, tub, and shower walls. We installed a led light in the shower to brighten the space and showcase the 3x6 subway tiles. The client desired a contemporary look so we custom built a double niche that extends from the tub to the ceiling. The double vanity with white quartz countertops is enhanced with brushed nickel faucets to add the finishing touch.



Traditional Master Bath

This master bathroom takes center stage with a top mount jacuzzi tub. A touch screen led mirror creates a modern spa like experience. A state of the art drain system was installed to ensure proper drainage. New electrical wiring was installed along with LED lights to enhance this well appointed bathroom.



Custom Guest Bath

A newly renovated hall bathroom is the perfect way to welcome guest into your home. This stunning renovation began with a full demo down to the studs. We removed the vanity, tub, and shower walls. We installed a led light in the shower to brighten the space and showcase the 3x6 subway tiles. The client desired a contemporary look so we custom built a double niche that extends from the tub to the ceiling. The double vanity with white quartz countertops is enhanced with brushed nickel faucets to add the finishing touch.



Boutique Hotel Shower

This shower was a part of an extensive bathroom remodel. Our client had very discerning taste and we were able to exceed all of her expectations with this project. We built a custom mud that was complete with a black marble mosaic shower floor tile. A custom granite slab seat runs wall to wall complimented by ceramic subway tile. The entrance of the shower is encased with black granite, and the custom glass shower door completes this boutique style bathroom.



Husky Lounge Room

This entertainment area was apart of a full basement remodel. Which comprised of the walls and ceiling being framed. Fully insulated with 2 inch foam board and sound proofing materials. HDMI low-voltage wiring ran throughout the entertainment space. Making it easy for the homeowner to add addition electrical upgrades in the future. Sherwin Williams Moisture resistant paint was used to finish this large 3000 square-foot basement. The entertainment unit includes a remote control electric fireplace with over 50 color options.



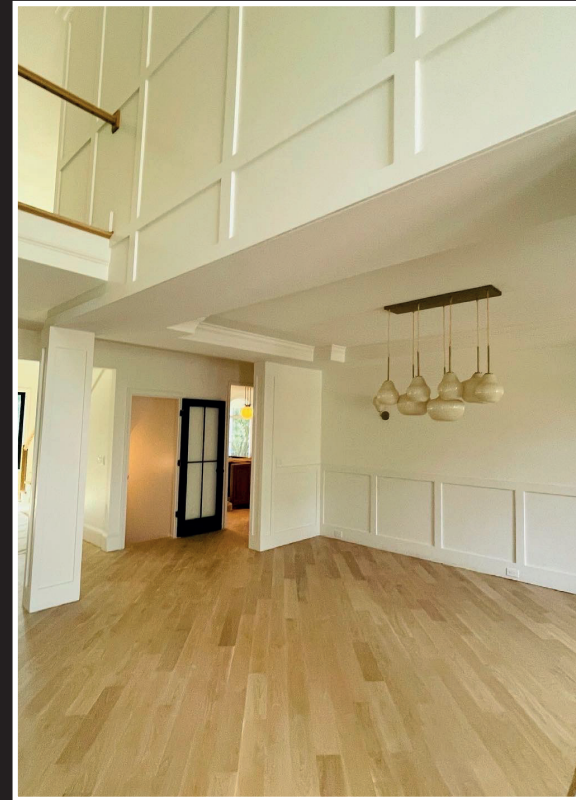
Charcoal Cinematic Space

The movie theater was the second phase of a 3,000 sqft basement project. This space was designed, framed, insulated and sound proofed. We commissioned one of Georgia's premier audio & visual companies to install low-voltage and high-fiber optic wiring and HDMI cables. A complete electrical installation was preformed for the control room of the movie theater. We installed recessed lighting throughout, outlets, dimmer switches, LED strips & and a projector in the ceiling. We built a custom platform & installed comfortable theater chairs with USBC outlets. To finish out the space we painted and installed wall to wall carpet.



Bit of sugar kitchen

This Modern Farmhouse kitchen has all the amenities that any home cook could wish for. Marble countertop backsplash with a PDI pot filler and 6 burner cook top range. The 9 ft island has a under mount sink that is excellent for meal prep and entertaining. Marble countertops with waterfalls set the stage for holiday parties. The custom handcrafted hood was designed to the specifications of the client. The vent hood encases a SUBZERO venting fan that is sure to remove all food odors and smoke.



Designer Board and Batten

When you have a 7,000 square foot home you can't entrust your renovations to just anyone. When we installed the white oak hardwoods throughout the home. Our client wanted to take it one step further and have them stained to create a custom look. The custom kitchen cabinets are all apart of this story book home renovation. The full basement boasts a state of the art home movie theater, 500 sqft home gym, with an entertainment area that features a full wet bar that seats 7 guests.



HUSKY CARA FINE HOMES

12850 HIGHWAY 9N 600-422

ALPHARETTA, GA 30004

TEL: 770-742-6912

E-MAIL HUSKYCARA@GMAIL.COM